

56 99

-66 24

1 CLERK'S OFFICE
2 APPROVED
3 Date: 8-10-99
4

Submitted by: Assemblymember TESCHE
Prepared by: Assembly Office
For reading: June 15, 1999

5 ANCHORAGE, ALASKA
6 AO NO. 99-99
7

8 AN ORDINANCE AMENDING ASSEMBLY ORDINANCE 93-183 (S-I)(aa) ADOPTED
9 JANUARY 11, 1994 AND AMENDED JUNE 7, 1994, WHICH PROVIDED FOR THE
10 REZONING FROM PC (PLANNED COMMUNITY DISTRICT) TO PC (PLANNED
11 COMMUNITY DISTRICT), FOR PORTIONS OF SECTIONS 7 AND 18, T13N, R3W, S.M.
12 AND SECTION 13, T13N, R4W, S.M.; AS DEPICTED IN EXHIBIT A, GENERALLY
13 LOCATED IN THE LOWER SHIP CREEK VALLEY BETWEEN THE RAILROAD YARDS
14 AND DOWNTOWN ANCHORAGE CONTAINING 127 ACRES MORE OR LESS.

15
16 (Planning and Zoning Commission Case No. 99-114)

(Downtown Community Council)

17
18
19 THE ANCHORAGE ASSEMBLY ORDAINS:
20

21 **Section 1:** Anchorage Ordinance No. 93-183(S-I)(aa), Section 5.E.13. is hereby
22 amended to read as follows:
23

- 24 13. open storage of [CINDERS], coal, feed, grain, [GRAVEL], or manure,
25 [PEAT], [SAND], or [topsoil].
26

27 **Section 2:** Anchorage Ordinance NO. 93-183(S-I)(aa), is hereby amended by
28 adding a new subsection 8 to Section 5.B Light Industrial Uses which states:
29

- 30 8. The temporary outdoor storage of cinders, gravel, peat, sand and rip rap.
31 The temporary storage of building materials for construction projects in the
32 port, Ship Creek railroad area and downtown. All storage will be by a short
33 term lease authorized by the Alaska Railroad with a thirty day cancellation
34 clause.
35

36 During the transition of the railroad land from an industrial use to commercial
37 retail tourist-oriented use, the staging of construction materials for projects
38 within this PC area and the central business district may occur. The storage
39 of construction material for any single construction project shall not exceed
40 24 months. The storage site property manager shall notify the Land Use
41 Enforcement Manager in writing of the date such storage is to begin, the
42 location of the storage site, and the associated construction project.
43
44
45

2
3
4 Storage of materials that are potentially subject to air-borne dispersal by wind
5 shall be contained, covered, or wetted to prevent such dispersal. Likewise,
6 material that may be deleterious to the Ship Creek drainage area through
7 surface run-off shall be contained in an environmentally sound manner to
8 prevent such run-off from entering the waters of Ship Creek and Cook Inlet.
9

10 **Section 3:** Anchorage Ordinance No. 93-183(S-I)(aa), Section 4.E.11 is hereby
11 amended to read as follows:

12
13 11 Manufacture or packaging of cement products, feed, fertilizer, [FLOUR], glue,
14 paint, petroleum products, soap, turpentine, varnish or charcoal.

15
16 **Section 4:** Anchorage Ordinance No. 93-183(S-I)(aa), is hereby amended by
17 adding new subsections 8 and 9 to Section 4.B Light Industrial Uses:

18
19 8. Manufacture of electrical power;

20
21 9. Manufacture of flour from grains.
22

23 **Section 5:** Anchorage Ordinance No. 93-183(S-I)(aa), Section 4.I Maximum Height
24 of Structures is amended to read as follows:

25
26 No new buildings shall exceed 40 feet in height. Existing buildings will be permitted
27 to infill or attach to an existing building to the height of the building, as long as it was
28 constructed prior to January 11, 1993. Design and facades shall shield antennas,
29 elevator housings, ventilators, air conditions, air exchanges, and the alike from the
30 street or other buildings within the district.
31

32 **Section 6:** The Director of the Department of Community Planning and
33 Development shall change the zoning map accordingly.

34
35 **Section 7:** This ordinance shall be effective upon passage and approval.

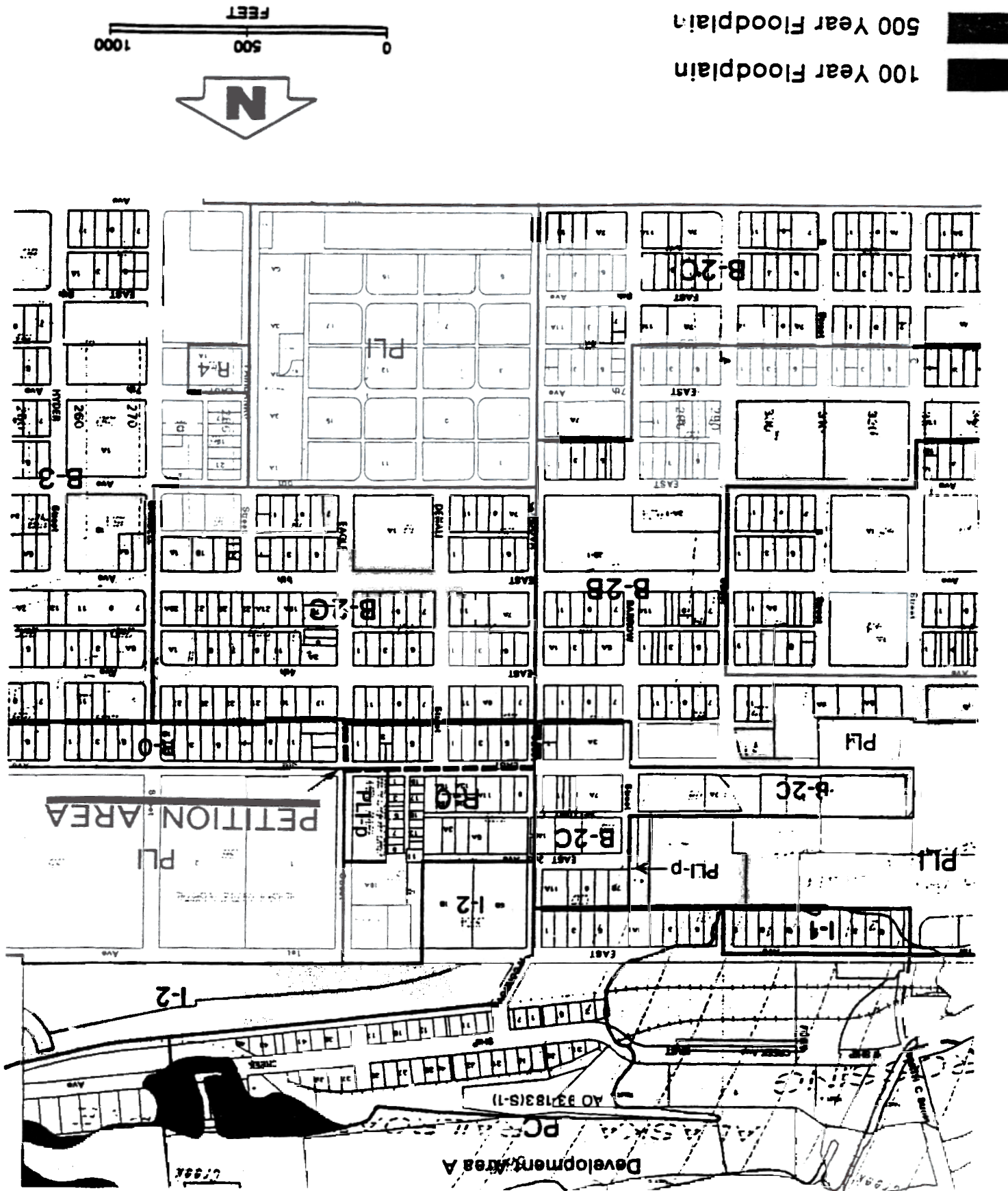
36
37 PASSED AND APPROVED by the Anchorage Assembly this 10th day of
38 August, 1999.

39
40
41
42
43
44
45
Chair

ATTEST:

43
44
45
Municipal Clerk

EXHIBIT A



AO 99-99
 Correct map in
 place of Exhibit A
 8-10-99 *Handwritten*

